

Specification No.:

Company:
Contact:
Street:
Zip:
Tel.:

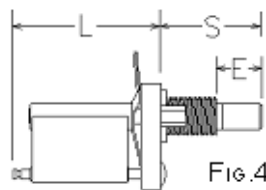
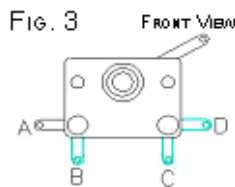
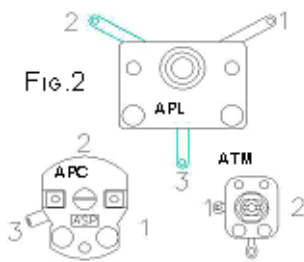
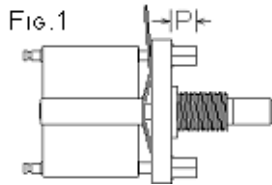
City:
Fax.:

E-Mail:

Dear valued customer,

the ultimate experience and manufacturing capabilities of OEP allow us to offer customer specific air capacitor versions for each individual application. "Standard" Capacitor versions do basically not exist. The attached table has been made to give you an overview on the existing option range. Please feel free to design your "own" capacitor and pass that specification to us for your individual quote.

Electrical Specifications APL, APC, ATM	capacitor section 1			capacitor section 2			capacitor section 3			NOTE: You should fill the yellow cells as minimum demand!
	APL APC ATM	imin cap. pF, section 1 function of C_{max} , V_{max}	imax cap. pF, section 1	ATM:0k5 APC:0k5-0k6-0k7-1k0 APL: 0k6-0k8-1k1-1k5-2k0	imin cap. pF, section 2 function of C_{max} , V_{max}	imax cap. pF, section 2	ATM:0k5 APC:0k5-0k6-0k7-1k0 APL: 0k6-0k8-1k1-1k5-2k0	imin cap. pF, section 3 function of C_{max} , V_{max}	imax cap. pF, section 3	
requested external part no.										
closest available ext. part no:										



- 1 = single insulator, 360 deg rotation
- 2 = double ceramic, 360 deg rotation
- 3 = single insulator, 180deg stop
- 4 = double ceramic, 180deg stop

- A = 3/8-32 x .48 threaded brg (APL only)
- B = 3/8-32 x .37 threaded bearing
- L = lock bearing
- E = low-profile bearing (used w mtg pillars)
- M = 1/4-32 x 1/4 threaded brg (ATM only)
- C = custom bearing

- N = no mounting pillars
- E = two mounting pillars tapped 4-4(
- M = two mounting pillars tapped M(
- F = four mounting pillars tapped 4-4(
- G = four mounting pillars tapped M(
- C = custom mounting pillars

- B = brass shaft, plain
- S = brass shaft, slotted
- H = brass shaft, hex
- D = delrin shaft, plain
- T = delrin shaft, slotted
- P = delrin shaft, pinned
- M = 6mm diam brass shaft
- C = custom shaft

Spider Position: 1, 2, or 3 in front
see Fig. 2 4, 5, or 6 in rear

Stator tab Position see Fig.3
A: front E: rear, pos'n A
B: front F: rear, pos'n B
C: front G: rear, pos'n C
D: front H: rear, pos'n D
N: no stator tab

Assembly build number	APL, APC, or ATM	Single/double ceramic 180° stop or 360° rotation	Bearing types	P = Mounting pillar length mm - see Fig.1	Mounting pillar metric, inch, or none	E = Shaft length, mm see Fig. 4	Shaft material and features	Rotor contact tab position, see Fig. 2	Stator tab position see Fig. 3	rotor contact length 1 = full 2 = short
Assembly build number:										

Quantity:	1	5	10	25	50
Price / ea. in Euro/€:					

L = Length, back side 0,0 mm
S = Length, mounting side 0,0 mm
Dim. see Fig. 4

Your Part - Order No.: