



WVS-TECHNOLOGY

WVS-TECHNOLOGY

WALTER V. STEINFELD, DIPL.-ING.

ROBERT-BOSCH-STR. 7 TEL.: +49 (0) 2150 - 91 28 10
D - 40668 MEERBUSCH FAX: +49 (0) 2150 - 91 28 11

VACUUM CONTACTOR

SERIES PVS 160-630

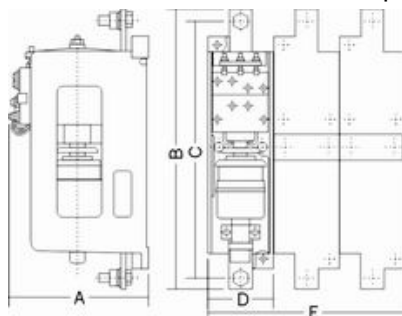
The series PVS 160-630 of heavy task low-voltage vacuum contactor is produced with the technology and key equipment introduced from abroad by our company. This product has met IEC, VDE technical standards and reached the nineties international advanced level. This series of vacuum contactors have such advantages as high capabilities of switch-on and switch-off, long electrical and mechanical lifetimes and high operating reliability under the bad conditions. They are especially suitable for being used in the basic industries, metallurgical, petrolic, chemical industries, mine and wharf. It is applicable to the power system with 50Hz/60Hz alternating current, rated operating voltage up to 1140V, rated operating current up to 630A to switch-on or off the circuit at a short or long-distance, to start frequently and control alternating motor under the heavy task and to form electromagnetic starter with other kinds of protective devices.



TYPE	PVS160	PVS250	PVS400	PVS630
Rated operating voltage U_e	1140V	1140V	1140V	1140V
Rated operating current I_e	160A	250A	400A	630A
Rated frequency	50Hz/60Hz	50Hz/60Hz	50Hz/60Hz	50Hz/60Hz
Rated turn-on capacity $\text{Cos}\phi=0.35$	1920A	3000A	4800A	7560A
Rated turn-off capacity $\text{Cos}\phi=0.35$	1600A	2500A	4000A	6300A
Max. allowable power of motor 660V50Hz	140kW	220kW	350kW	560kW
Close time	30ms	30ms	30ms	30ms
Release time	20ms	20ms	15ms	15ms
Mechanical lifetime (Times)	5×10^6			
Max. operating frequency (Times/h)	3000			
Electrical lifetime	Ac2	3×10^6	2×10^6	2×10^6
	Ac3	5×10^6	5×10^6	5×10^6
	Ac4	0.12×10^6	0.08×10^6	0.08×10^6

Service condition:

- (1) The normal working condition of this contactor accord with GB/T 14048.1--93 "Low-voltage Switch and Control Equipment".
- (2) Allowable surrounding air temperature: $-25\text{j}\text{æ}$ -- $45\text{j}\text{æ}$.
- (3) Relative humidity: Max, relative humidity can be 90at $25\text{j}\text{æ}$.
- (4) Pollution grade: 3.
- (5) Altitude: not over 2000m
- (6) Installing condition: up vertically (driving device is up) the slope between the installation area and vertical plane should not be over 15°



Type	PVS160	PVS250	PVS400	PVS630
A	155	155	200	200
B	300	310	330	300
C	280	285	305	310
D	75	75	87.5	87.5
E	225	225	262.5	262.5